

## Frequency • 118 - 137 Mhz

Designed specifically for mounting to the underside of an aircraft providing excellent radiation coverage for air-to-ground VHF communications. Bent configuration makes it ideally suited for helicopters and low wing aircraft.

The CI 122 has been re-tested and upgraded to the new RTCA DO-160D environmental requirements and offers 118 to 137 MHz frequency associated with the DO-186A MOPS.



### MODEL - CI 122

#### Electrical

|                   |                 |
|-------------------|-----------------|
| Frequency         | 118-137         |
| VSWR              | 3.0:1 Maximum   |
| Polarization      | Vertical        |
| Radiation Pattern | Omnidirectional |
| Impedance RF      | 50 Ohms         |
| Power RF          | 50 Watts        |

#### Mechanical

|           |                                |
|-----------|--------------------------------|
| Weight    | 0.75 lbs Max.                  |
| Height    | 18.50 inches Max.              |
| Material  | Cast Housing / Stainless Steel |
| Finish    | Polyurethane Enamel            |
| Connector | BNC (female)                   |

#### Environmental

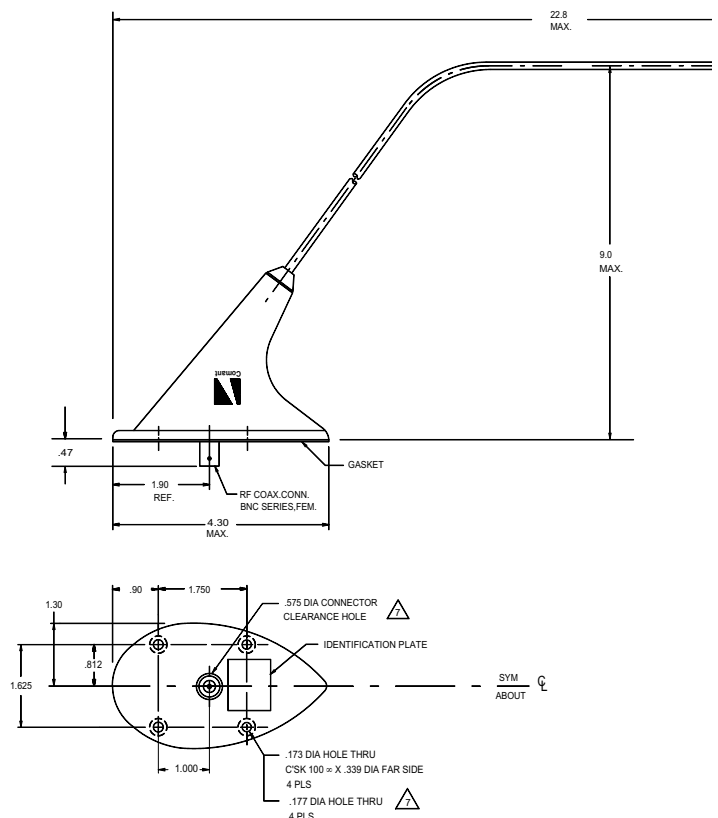
|             |                    |
|-------------|--------------------|
| Temperature | -55 to +85 Celcius |
| Altitude    | 50,000 ft.         |
| Airspeed    | 350 KTAS           |

#### Federal Specifications

|                    |            |
|--------------------|------------|
| FAA TSO            | C37d, C38d |
| RTCA Environmental | DO-160D    |

#### Gasket

|          |               |
|----------|---------------|
| B12607-3 | Cork Neoprene |
|----------|---------------|



**Warning:** Drawing not to scale. Use factory supplied drawings and specifications for installation. Refer to FAA AC 43.13-2A for installation guidelines. © 2007 Comant Industries, Inc. Patented. Other Patents Pending.