

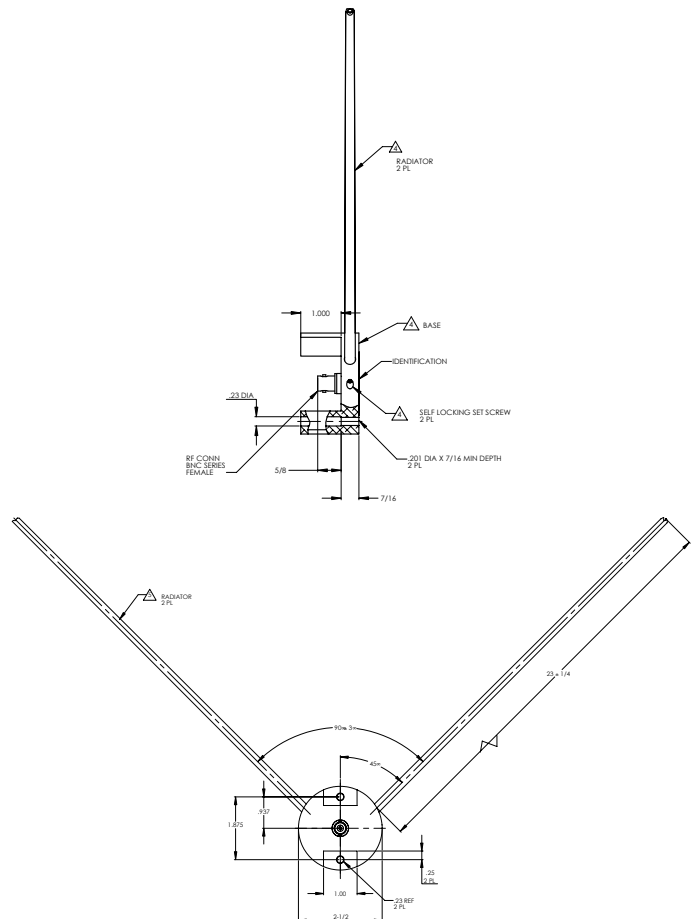
**Frequency • 108-118 MHz (VOR/LOC)
329-335 MHz (GS)**

“V” Dipole VOR/LOC/GS antenna with detachable elements featuring two integrally molded mounting legs or “spacers” for increased strength. Radiating elements are laminated with polyester glass material for improved precipitation static protection. Interchangeable with the VOR/LOC/GS antennas used on most Cessna single engine aircraft since 1980 including the Cessna 182 and 210 models.

Not approved for helicopter installations.



MODEL - CI 215	
Electrical	
Frequency	108-118 MHz (VOR/LOC) 329-335 MHz (GS)
VSWR	3.0:1 Max. 108-118 MHz (VOR/LOC) 3.0:1 Max. 329-335 MHz (GS)
Polarization	Horizontal
Radiation Pattern	Dipole
Impedance RF	50 Ohms
Power RF	Receive Only
Mechanical	
Weight	0.6 lbs. Maximum
Height	16.0 in. Maximum
Material	Delrin mounts / Glass Laminate Whips
Finish	Black housing/ Polyurethane Enamel
Connector	BNC (Female)
Environmental	
Temperature	-55 C to +85 C
Altitude	50,000 ft
Airspeed	250 KTAS @ 25,000 ft.
Federal Specifications	
FAA TSO	C34c, C36c, C40a
RTCA MOPS	DO-192, DO 195, DO 196
RTCA Environmental	DO-160



Warning: Drawing not to scale. Use factory supplied drawings and specifications for installation. Refer to FAA AC 43.13-2A for installation guidelines. © 2006 Comant Industries, Inc. Patented. Other Patents Pending.