

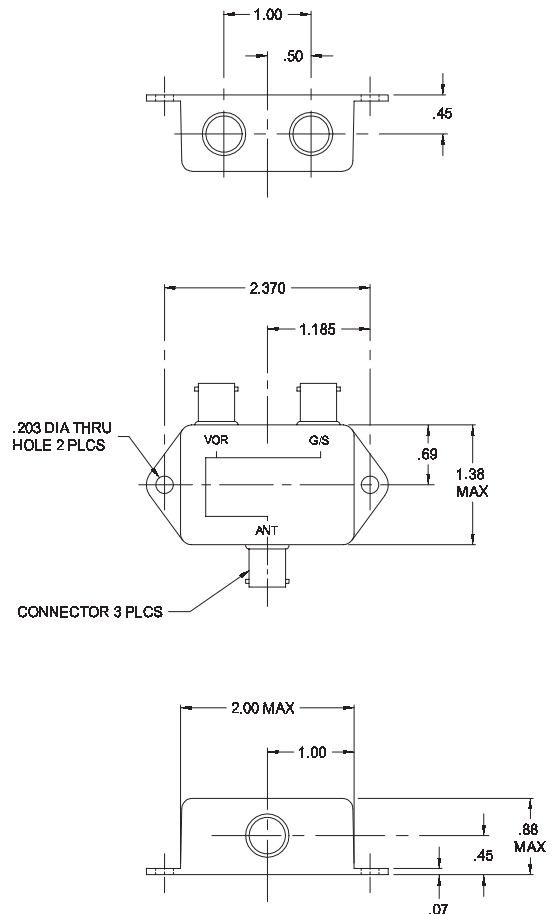
# Diplexer VOR/GS • CI 507

## Frequency • 108-118 MHz & 329-335 MHz

Single VOR / single glide slope diplexer allows the operation of one VOR and one glide slope receiver from one VOR/glide slope antenna. Compact design makes installation easy.



MODEL - CI 507 Diplexer VOR/GS	
<b>Electrical</b>	
Frequency	108 - 118 MHz & 329 - 335 MHz
VSWR	1.5:1 Maximum
Isolation	20 dB Minimum
Insertion Loss	0.5 dB Maximum
Impedence	50 Ohms
<b>Mechanical</b>	
Weight	0.20 lbs
Height	0.88 inches
Construction	Die Cast Aluminum
Finish	Aluminum
Connector	BNC (female)
<b>Environmental</b>	
N/A	Internal Mounting
<b>Federal Specifications</b>	
FAA TSO	C34c, C36c, C40a



**Warning:** Drawing not to scale. Use factory supplied drawings and specifications for installation. Refer to FAA AC 43.13-2A for installation guidelines. © 2006 Comant Industries, Inc. Patented. Other Patents Pending.