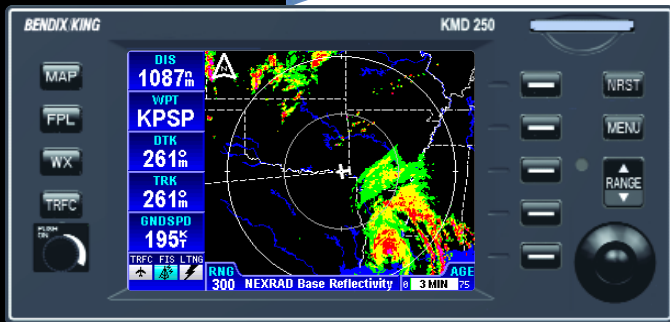


KMD 250 Multi-Function Display



The Newest Safety System

The KMD 250 Multi-Function Display (MFD) is the newest addition to the popular KMD 550 and 850 MFDs, part of the Bendix/King Integrated Hazard Avoidance System (IHAS) family. With traffic and data link weather capability, this moving map display with terrain and an optional internal VFR GPS is an ideal safety solution for any General Aviation aircraft. It features a sharp 3.8-inch-diagonal active matrix liquid crystal display (AMLCD). And, like other IHAS family components, it is as flexible as it is functional. Add functionality such as weather and traffic when you need it.

SAFER SITUATIONAL AWARENESS

Safety is a Bendix/King priority. And the KMD 250 comes well-equipped to meet the need, with moving map functionality, terrain, and optional internal GPS. At any time, add the safety sensors you need, including data link weather (Flight Information Services, or FIS) via the Bendix/King KDR 510 VDL Mode 2 Data Link Receiver; lightning detection via the Goodrich WX-500 Stormscope®; and traffic through any of the Bendix/King IHAS traffic products. The KMD 250, KDR 510 and KT 73 Mode S Transponder combine to comprise the IHAS 2000 Integrated Hazard Avoidance System — safety at a very competitive price.

EASY TO FLY

The simplicity of the KMD 250 makes it easy for you to concentrate on your flight, not your panel. The keys to the left allow you to switch directly to the map, flight plan, weather screens or traffic screen. A unique joystick/knob lets you point, scroll, and move a cursor around the screen. A dedicated range button makes zooming in and out a one-step process. And soft keys, (keys that change functionality for each page), add flexibility so your next step is always one key press away. The KMD 250 even boasts our popular QuickTune™ feature, allowing you to load frequencies directly into a Bendix/King KX 155A or KX 165A NAV/COMM.

GROUND COVERAGE

The map pages of the KMD 250 incorporate detailed topography, giving you either relative or absolute terrain perspective. Relative terrain allows you to view terrain shaded by its elevation relative to your aircraft; absolute terrain provides a view of terrain based on how far it is above or below sea level. Your view is further enhanced by towers (U.S. only), rivers, roads, airports, VORs, NDBs, intersections, airways, SUAs, cities, railroads, lake names and runway diagrams, for example. Add further depth by overlaying traffic, FIS weather or lightning.

WEATHER BRIEFING

Data link weather is the newest weather technology available in the cockpit. NEXRAD graphics, METARs, TAFs, PIREPs, AIRMETs, SIGMETs, and a host of other weather products are available through the KDR 510 VDL Mode 2 Data Link Receiver. Basic text products are free, while graphical products are available through The Bendix/King Wingman™ Services subscription. A Goodrich WX-500 Stormscope® can add lightning detection functionality to complete your weather outlook.

BENDIX/KING®

EQUIPPED WITH CONFIDENCE.

TRAFFIC SURVEILLANCE

An array of traffic products can supply the KMD 250 with input for traffic. Select the traffic product that best suits your needs: Traffic Information Services (TIS), Traffic Advisory System (TAS), or Traffic Alert Collision Avoidance System (TCAS I or II). TIS is provided through the Bendix/King KT 73 Mode S Transponder which receives data link traffic avoidance from the FAA's secondary surveillance centers. TIS displays transponder-equipped aircraft within 3,000 ft. above or below your aircraft at up to a 7.5 nm range. Select TAS or TCAS for an active interrogation system.

GPS

An optional internal VFR GPS saves panel space and provides a GPS with the quality and reliability you expect from Bendix/King. It can serve as a back-up for an external GPS, complete with automatic switch-over if the external GPS fails. Or use the internal GPS for flight planning, Direct To and navigation capability.

Key Benefits of the KMD 250 MFD

- Full-color, 3.8-in.-diagonal display for enhanced situational awareness
- High-resolution, color TFT active-matrix LCD display
- Optional VFR GPS
- Outstanding sunlight readability with wide viewing angle
- High-speed, high-capacity, front-loading Secure Digital data card
- Unique joystick knob control
- Solid-state design with high reliability
- Traffic, FIS, Stormscope Lightning
- Available safety sensors:
 - Weather:
 - Flight Information Services, Data Link Weather (KDR 510)
 - Lightning Detection, Goodrich Stormscope® WX-500
 - Traffic:
 - Traffic Information Services — TIS (KT 73)
 - Traffic Advisory System — TAS (KTA 870, Goodrich Skywatch™ and Skywatch™ HP, Ryan TCAD 9900BX)
 - Traffic Alert Collision Avoidance System — TCAS I (CAS 66), (KTA 970) and TCAS II (CAS 67)

©2002 Honeywell International Inc.
10/02 006-18286-0000 5K Printed in USA

Policy Notice: Avionics installations require special skills, tools and test equipment. Our limited warranty is valid only for equipment installed in accordance with our sales and service policies.

In keeping with our policy of continual product improvement, designs and specifications may be altered without notice.

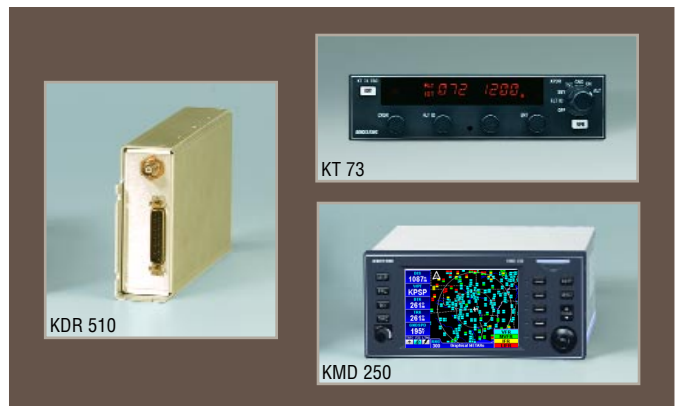
The IHAS Connection

As revolutionary as the KMD 250 Multi-Function Display is itself, it offers even greater capability as an element of the Integrated Hazard Avoidance System (IHAS).

The KMD 250 is part of the IHAS 2000 system, comprising the KMD 250 Multi-Function Display, KDR 510 VDL Mode 2 Data Link Receiver and the KT 73 Mode S Transponder. The KMD 250 integrates the four major airborne safety systems: positioning, weather avoidance, traffic advisories and terrain awareness — on one easy-to-read Multi-Function Display.

For additional capabilities, Bendix/King offers the KMD 550 Multi-Function Display (for non-radar-equipped aircraft) and the KMD 850 (for radar-equipped aircraft).

IHAS is simply the most comprehensive safety and situational awareness system ever offered to general aviation.



IHAS 2000

SPECIFICATIONS

- Height:** 3 in. (7.62 cm)
- Width:** 6.25 in. (15.87 cm)
- Length:** 7.5 in. (19 cm)
- Weight:** 3.5 lbs (1.62 kg)
- Certification:** FAA TSO C113
- Environmental Standards:** DO160D

Size and weight specifications are preliminary and subject to change.

Honeywell

23500 W. 105th Street, Olathe, KS 66061-1950
Telephone 913.712.2613 Fax 913.712.5697
Toll-Free in U.S. 877.712.2386
www.bendixking.com
bendix.king@honeywell.com

BENDIX/KING®
EQUIPPED WITH CONFIDENCE.