



Now, via satellite, Garmin connects your cockpit with the latest and best in graphical weather data.

GDL 69 and 69A specifications

A breakthrough in inflight weather data delivery, the remote GDL 69 satellite receiver teams with a variety of Garmin navigation displays to bring reliable, continuous weather updates directly into the cockpit.

Through a partnership with XM Satellite Radio and their XM WX™ Satellite Weather service, Garmin now makes it possible for near real-time graphical weather data to be accessed directly on the popular GNS 400 and 500 series navigators, the MX20 Multi-function display, and the fully integrated G1000™ “glass cockpit” system,

Using the GDL 69, pilots who subscribe to the XM WX aviation service can have instant access to a wide array of North American weather reports and outputs, including*:

- High-resolution NEXRAD weather data**
- METARS (in textual or graphical form)*
- TAFs
- TFRs
- Winds aloft
- Echo tops
- Precipitation type (at surface)
- Lightning
- Storm cell size, speed and direction
- SIGMETs
- AIRMETs
- and much more.



GNS 530



MX 20



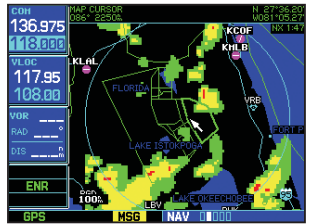
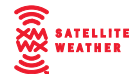
G1000

The XM WX Satellite Weather suite is powered by WxWorx. This location-specific WxWorx data, which is collected from multiple government agencies (including the National Weather Service and U.S. Navy) as well as private sources, is analyzed and delivered to XM WX Weather subscribers, using proprietary methods and technology.

XM Satellite Radio's two powerful S-band geostationary satellites, positioned over the east and west coasts, provide seamless, redundant coverage across the continental U.S. and its coastal waters. The uplink is continuous. There's no request/reply sequence – and no waiting. XM WX offers unparalleled reliability at any altitude. So, you fly with a whole new level of confidence, comfort and security.

In addition, you can also fly with the latest news, sports, music and entertainment via XM Satellite Radio and the GDL 69A model receiver.

For an additional monthly subscription fee, XM WX users can add and enjoy over 120 channels of continuous broadcast music or information – with an industry-leading play list of over 2 million titles and digital quality audio that is free from interference. To bring the great sound onboard, the GDL 69A interfaces with your cockpit audio panel control to play through the aircraft's audio system. The sound-enabled GDL 69A is compatible with the Garmin G1000 and MX20 systems – as well as factory upgraded, WAAS-enabled Garmin GNS 430 and 530 integrated GPS/COM/NAV units.



GNS 530 - NEXRAD image overlaid on moving map improves safety with early deviation planning



GNS 530 - Textual METARS keep you up to date with destination weather



GNS 530 - Graphic METARS provide weather at a glance capability along your route



MX 20 - Visual cloud top graphic gives excellent overview of cloud coverage and areas to avoid



G1000 - Precipitation types along with winds aloft allows pilot to avoid hazardous conditions and forecast future movement along the route of flight

Physical	
Dimensions:	7.20" D x 6.15" W x 1.05" H
Mounting:	Mounting rack and hardware supplied
Weight:	1.86 lbs. unit, 2.81 lbs. unit and rack
Environmental	
Temperature:	-55° C to +70° C (Operating) -55° C to +85° C (Storage)
Humidity:	95% non-condensing
Altitude range:	-15,000 ft. to +55,000 ft.
Power requirements:	9 to 33 VDC input 4.2 watts maximum

Other Specifications	
Satellite receiver frequency:	2332.5 to 2345 MHz
Downlink data rate:	38.4K bits per second
Software Certification:	RTCA DO-178B Level D
Environmental Certification:	RTCA DO-160D

XM WX and logo are trademarks of XM Satellite Radio Inc. © 2004 XM Satellite Radio Inc. All rights reserved



Garmin International, Inc.
1200 East 151st Street, Olathe, KS 66062
p: 913.397.8200 f: 913.397.8282

Garmin (Europe) Ltd. Unit 5, The Quadrangle, Abbey Park Industrial Estate, Romsey, SO51 9DL, U.K. 44.1794.519944 fax 44.1794.519222

Garmin Corporation, No. 68, Jangshu 2nd Road, Shijr, Taipei County, Taiwan 886.2.2642.9199 fax 886.2.2642.9099

www.garmin.com

© 2004 Garmin Ltd. or its subsidiaries

Specifications are preliminary and subject to change without notice.

* For information about XM subscriptions go to www.XMWXweather.com

**NEXRAD, Graphic METARS, and Textual METARS are the only weather products available on GNS 400/500 series non-WAAS units.